

Tucuxi EV

ElektrikCar

An Electric Car Company in the Making

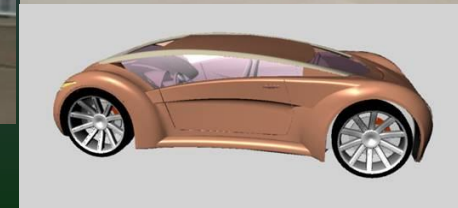


Preorder Contact : preorder@elektrikcar.com

Copyrights ElektrikCar LLC 2018

Background and Experience

ElektrikCar is startup electric vehicle company with experience in developing and Building electric vehicles as well as hybrid fuel cell electric vehicles. Our EV are Deployed in Indonesia while our HFCEVs are run in Shenzhen, China
Our cars are built by hand from scratch (the Tucuxi) or retrofits of major coach manufacturer.



Tucuxi Electric Vehicle

As climate change shows its devastating impacts, battery powered electric vehicles (EV) are our contribution to slow down this harmful climatic process.

EV technology has been mature, simpler and more reliable nowadays. The technology is significantly improved with the advancement of battery technologies, electric motor power and high power electronics that allow us to have expanded driving range and reduction of fire hazards.

Therefore, your decision to purchase electric vehicles is timely correct

Our Vehicle Strengths are our range, short charging time, price and styling which are more competitive than other EV manufacturers

We provide three Tucuxi models for your need.



To Order Tucuxi EV: preorder@elektrikcar.com

Tucuxi EV Configuration Pricing :

- Model A, 22KWH Battery, **85 mile range** (could be upgraded) : \$25,800
- Model B, 51KWH Battery, **200 mile range** : \$36,000
- Model C, 71KWH Battery, **250-300 mile range** : \$45,000

To Order Tucuxi EV: preorder@elektrikcar.com



As the primary electric storage, Lithium-Ion, Lithium Iron Phosphate (LiFePO4) or if possible the latest Nano-Lithium battery system will be used.

To prevent fire hazards and to regulate battery charging or discharging, the battery modules will be equipped with battery management systems (BMS). BMS technologies are intended to set apart battery safety from those installed on laptops.

With these specifications, our electric vehicles will be safe and can have a range of 85-300 miles on single battery charge with maximum speeds between 180 mph.

Our Cars will be made of composites of alloys and carbon fiber bodies arranged on a space framed body structure.

Technical Specifications

Battery : Lithium Ion, Lithium Iron Phosphate or Nano-Lithium
Range : 85-300 miles per charge (depends of selected powers)
Charging Time : Depends on Battery Configuration 1-5 hours
Passenger Capacity: 2 (+2) or 4 passengers
Speed: 180 mph cruise speed, 180+ mph pulse speed

Dimensions

Length: 4426.9mm / 174.3 inch
Width: 1930.7mm / 76.0 inch
Height: 1282.7mm / 50.5 inch
Wheel Base: 3118.0mm / 122.8 inch
Track: 1606.5mm / 63.2 inch
Ground Clearance: 150.9mm / 5.9 inch
Curb Weight: 1112.1Kg / 2500lbs

To Order Tucuxi EV: preorder@elektrikcar.com

An Electric Car Company in the Making



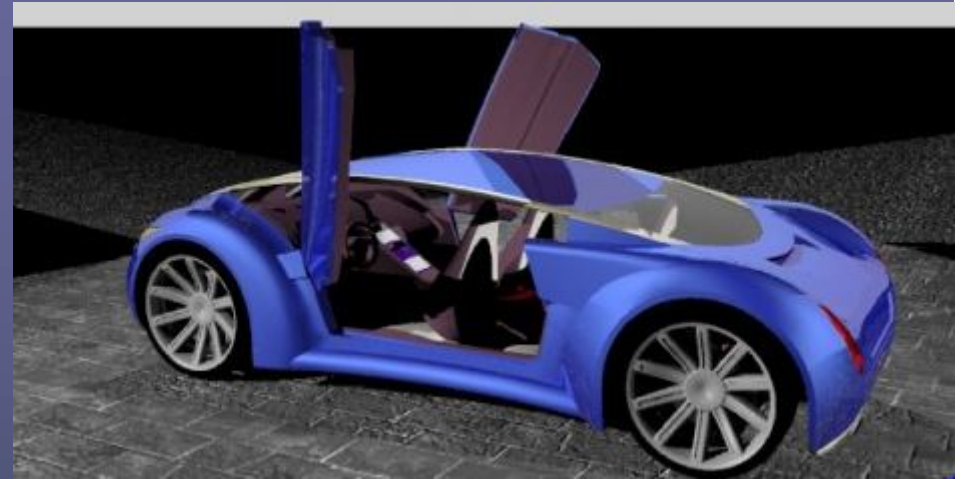
Vehicle Features :

Tucuxi EV is to be your platform at home and away

- Wifi based Note pads that can be docked/carried away
- Wifi router for your internet access at home, during travel and away
- Electrical charging sources for all of your gadgets
- Electrical power source for your home needs
- Electrical power source for your outdoor adventure
- Short charging time (1-3 hours)
- Self-Driving mode capable in the future

ElektrikCar

An Electric Car Company in the Making



To Order Tucuxi EV: preorder@elektrikcar.com

Copyrights ElektrikCar LLC 2018

ElektrikCar

An Electric Car Company in the Making



Address:

5701 Cherry Lane
West Bloomfield, MI 48324

Phone: (248) 425-1712

Fax: (248) 706-1913

Email: dtama@elektrikcar.com

Web: <http://elektrikcar.com>

To Order : preorder@elektrikcar.com



Tucuxi EV Configuration Pricing :

- Model A, 22KWH Battery, 85 mile range (could be upgraded) : \$25,800
- Model B, 51KWH Battery, 200 mile range : \$36,000
- Model C, 71KWH Battery, 250-300 mile range : \$45,000